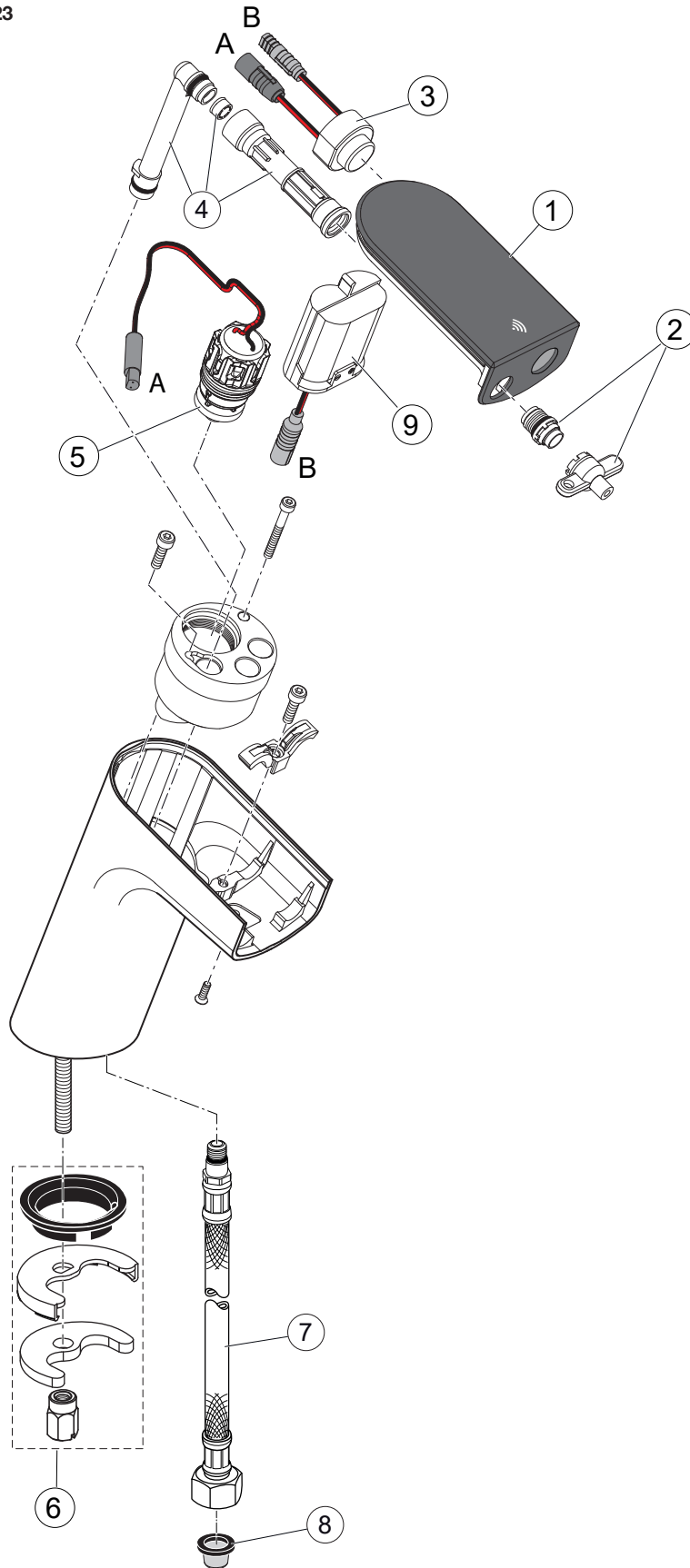


Produced from: May 2023

Sensor Basin Electronic

Chrome

A7859AA



Pos.	Description	Part-Number	Qty.	Pos.	Description	Part-Number	Qty.
1	Acryl Cover cpl.	A 861 534 NU	1 Set	8	Strainer Ø15	F 961 032 NU	1 pcs
2	Flowregulator with Key	A 861 531 NU	1 Set	9	Battery case	A 861 617 NU	1 Set
3	IR Sensor	A 861 702 NU	1 pcs		Battery 6V CR-P2	A 960 161 NU	1 pcs
4	Connection pipe	A 861 680 NU	1 Set		<i>* Universal-Set (not all parts needed)</i>		
5	Solenoidvalve 6V G1/2	F 961 050 NU	1 pcs				
6	Fixation set	A 960 001 NU*	1 Set				
7	Flex. hose M10x1/450-G3/8	A 860 794 NU	1 pcs				