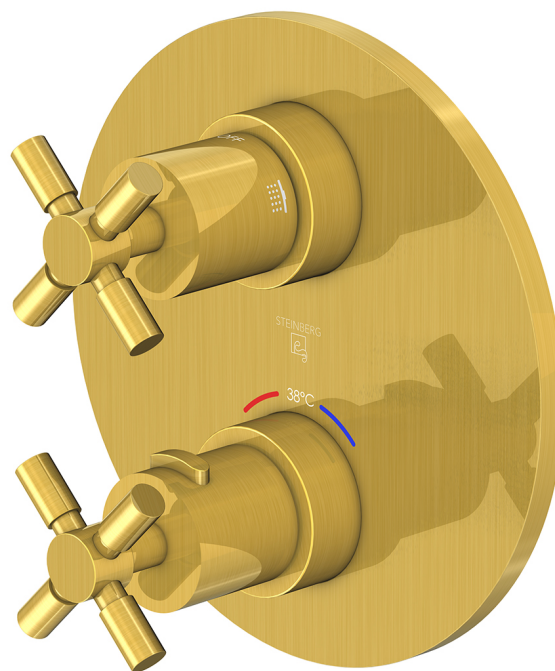


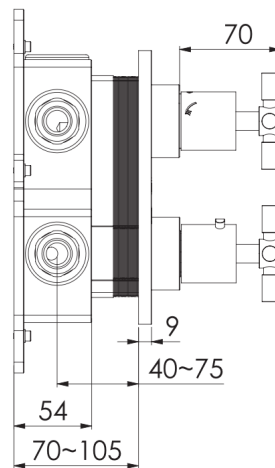
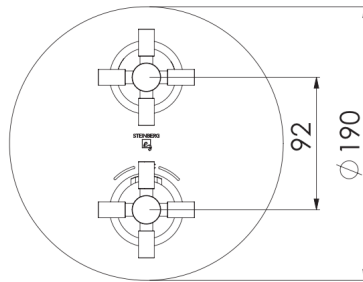
250 4133 3 BG

PRODUKTBILD



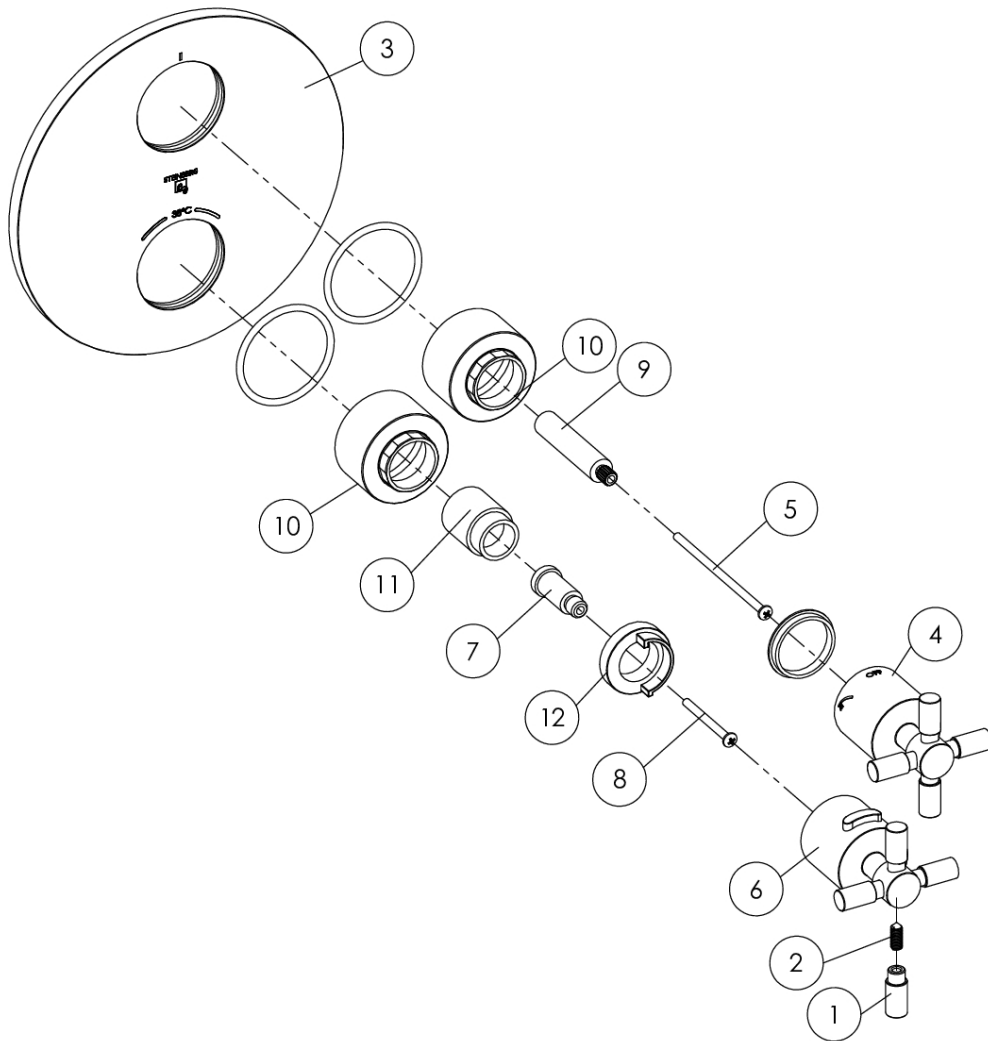
250 4133 3 BG


TECHNISCHE ZEICHNUNG



250 4133 3 BG

EXPLOSIONSZEICHNUNG



| PartNo | DE          | EN   |  |
|--------|-------------|--|--|
| 1      | 250 9901 BG | Griffpin zum Kreuzgriff Serie 250 (Set =4), Brushed Gold | handle pin for cross handle ( set = 4), brushed gold   |
| 2      |             | Madenschraube M5x15                                      | grub screw M5x15   |
| 3      | 099 9885 BG | Schub-Rosette Ø190 mm, Logo, Markierung, Brushed Gold    | push-rosete Ø 190 mm; logo, marks, brushed gold  |
| 4      | 250 9903 BG | Kreuzgriff Umsteller 2-Wege mit OFF, komplett, B. Gold   | cross handle 2-way diverter with off, complete, brush. gold  |
| 5      |             | Schraube M4x90   | screw M4x90  |
| 6      | 250 9902 BG | Kreuzgriff Thermostat ohne Markierungen, Brushed Gold    | cross handle of thermostat without marks, brushed gold   |
| 7      | 099 4206    | Spindel zu THM Griff; Länge 25 mm                        | spindle for thermostatic handle; length 25 mm  |
| 8      |             | Schraube M4x45 (Einbautiefe 50-75 mm)                    | screw M4x45 (built depth 50-75 mm)   |
| 9      | 099 4366 3  | Spindel Umstellung; L=56 mm; DZ18/20; Schraube L=64mm    | spindle of diverter; L=56 mm, DZ 18/20 with screw L=64mm   |
| 10     | 099 4114 BG | Abdeck-Hülse zu Umstellung/Thermostat, Brushed Gold      | cover sleeve of diverter / thermostat, brushed gold  |
| 11     | 099 4236    | Kunststoffeinsatz zu THM Griff                           | plastic part for thermostatic handle   |
| 12     | 099 2736    | Anschlag-Ring für Thermostat                             | stop ring for thermostat   |
|        |             |  | 250 4133 3 BG  |
|        |             |  | 18.04.2023   |
|        |             |  | STEINBERG<br> |