

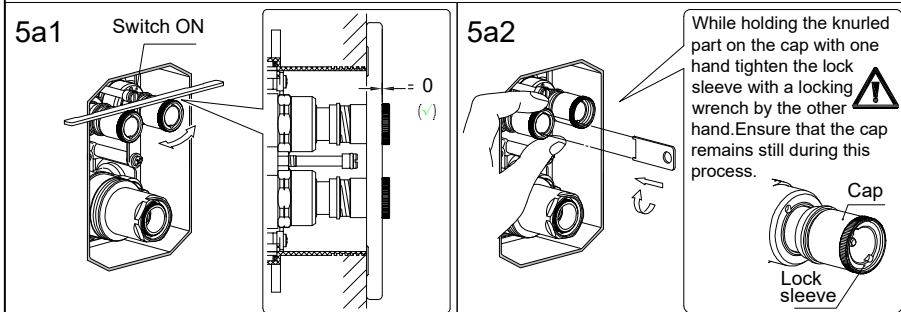
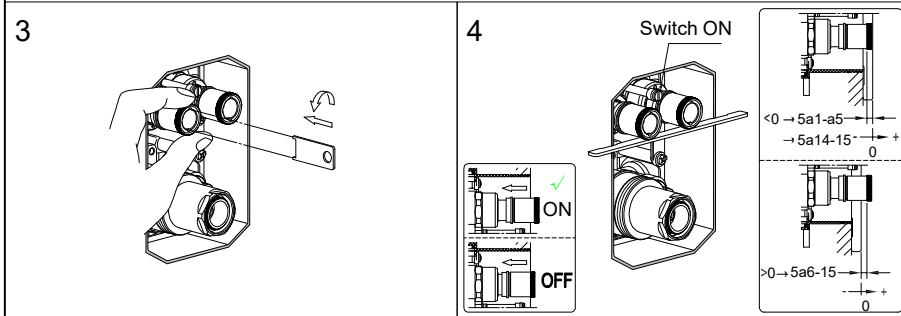
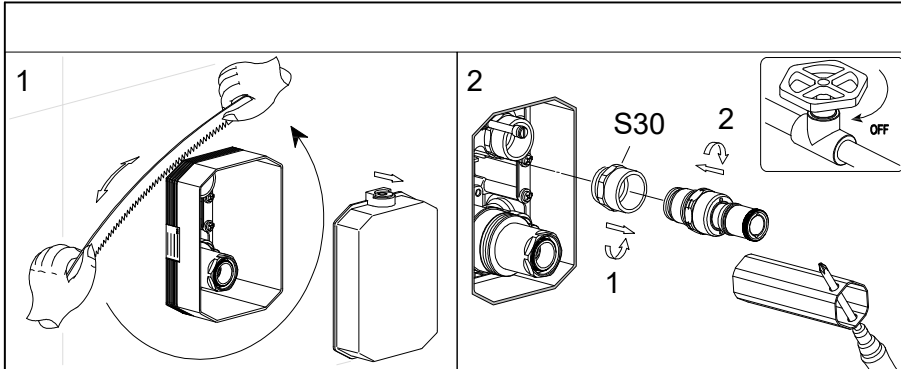
STEINBERG



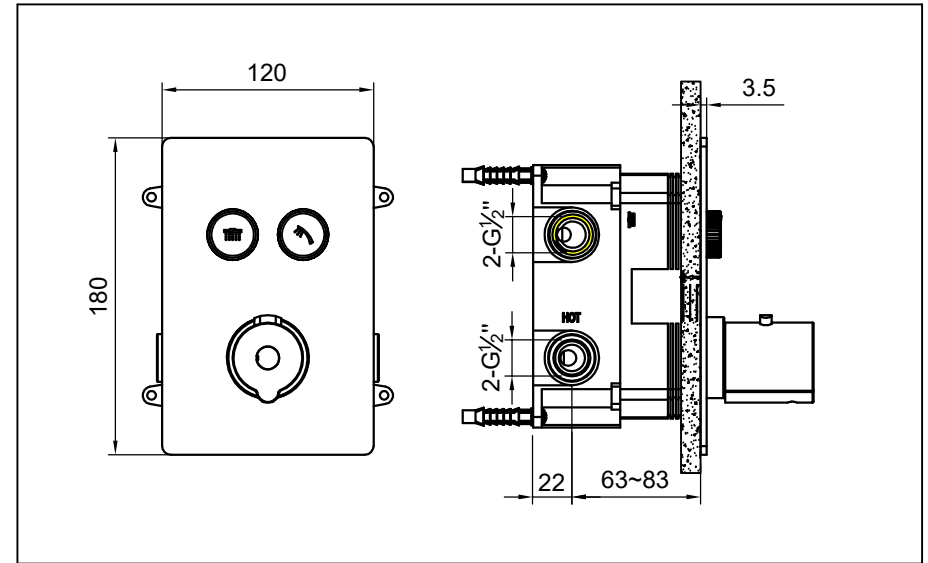
Fertigmontageset

Art.Nr.390 4222 3

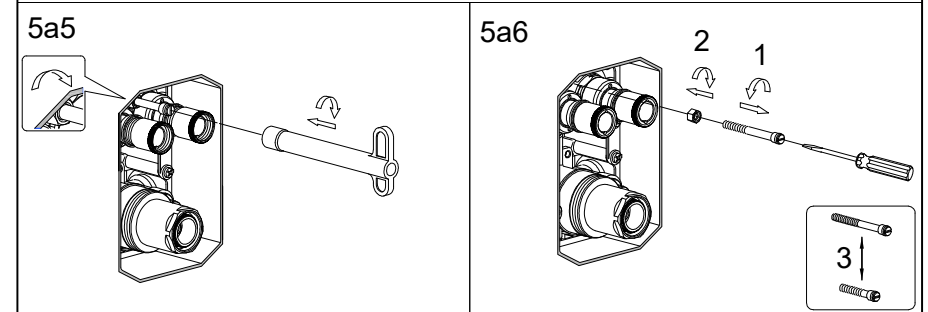
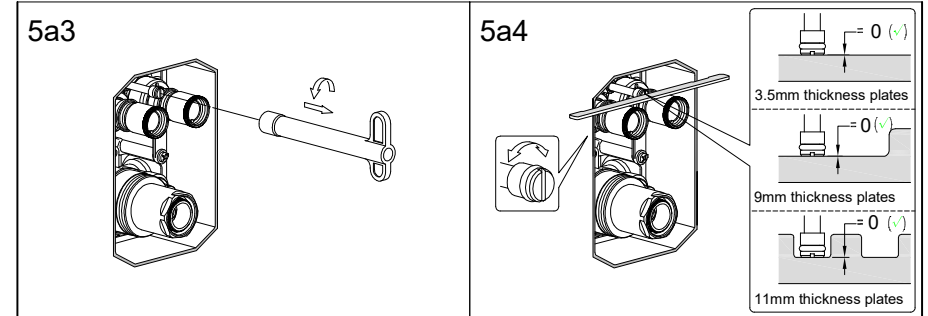
Installation



Technische Zeichnung



Installation



STEINBERG



Fertigmontageset

Art.Nr.390 4222 3

Installation

| | |
|--|---|
| <p>5a7</p> <p>1</p> <p>2</p> <p>Chamfer facing outside</p> | <p>5a8</p> <p>3.5mm thickness plates</p> <p>9mm thickness plates</p> <p>11mm thickness plates</p> <p>=0 (✓)</p> <p>=0 (✓)</p> <p>=0 (✓)</p> |
| <p>5a9</p> | <p>5a10</p> <p>1</p> <p>2</p> |
| <p>5a11</p> | <p>5a12</p> <p>Switch ON</p> <p>=0 (✓)</p> |

Installation

| | |
|--|--|
| <p>5a13</p> <p>While holding the knurled part on the cap with one hand tighten the lock sleeve with a locking wrench by the other hand. Ensure that the cap remains still during this process.</p> <p>Cap</p> <p>Lock sleeve</p> | <p>5a14</p> <p>Gently install the connecting rod onto the adjusting rod until it reaches the end.</p> |
| <p>5a15</p> <p>1</p> <p>$-3 < X \leq 0$</p> <p>$X > 0$</p> <p>2</p> <p>3</p> | <p>6</p> <p>38°C</p> |
| <p>7</p> <p>11-13mm</p> <p>ON</p> <p>OFF</p> | <p>8</p> <p>Dash on cartridge</p> <p>Thermostatic cartridge</p> <p>Stop collar</p> <p>Dash on extended spindle</p> <p>Extended spindle</p> <p>38°C</p> <p>38°C</p> <p>Keep the following parts aligned vertically as shown in above picture: the 38°C mark on the face plate, the dash on cartridge, and the dash on extended spindle.</p> |
| <p>9</p> | <p>10</p> <p>High</p> <p>Low</p> <p>HOT</p> <p>COLD</p> |

STEINBERG



Fertigmontageset

Art.Nr.390 4222 3

Explosionszeichnung

